



CRTX3
WORKHORSE
floorscrapers.com

Raw HorsePower on The Jobsite

CERAMIC REMOVAL TOOL - 3RD GENERATION

3 tools in 1



CRTX3 SPECIFICATIONS

Tool includes 3 Carbide teeth.
Easy Install.
Custom mounting options available for
other manufacturers.

Patent Pending

All Steel Construction

Width: 7"

Length: 16.5"

Unit weight : 33 lbs

$\frac{3}{4}$ " Bolts with lock nuts.

Wrench included.



ONSITE EQUIPMENT MANUFACTURING
WWW.FLOORSCRAPERS.COM
630.293.4000

3 WAYS TO USE THE CRTX3 TOOL

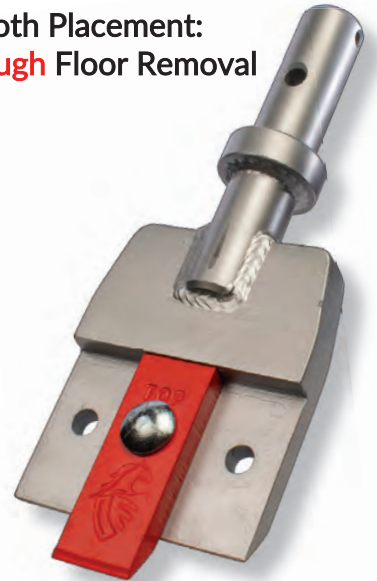
Tooth Placement:
For **Easy** Floor Removal



Tooth Placement:
For **Medium** Floor Removal



Tooth Placement:
For **Tough** Floor Removal



Three teeth placement:

- When the tile pops-off relatively easily
- When the tile consistently separates intact from the mortar
- When the mortar is soft and powdery

Two teeth placement:

- When the tile is moderately bonded to the mortar and does not separate easily
- When the tile is inconsistently bonded to the mortar and tends to break 50% of the time
- When the mortar is softer and quite crumbly.

One tooth placement:

- When the tile is well bonded to the mortar When
- the tile consistently breaks, and more head pressure is needed to get underneath the tile
- When the mortar is hard and well bonded to the substrate



Replacement Carbide Teeth are sold in packs of three